

BEAVERTAIL

Instructions 1700 Series Boat Blinds

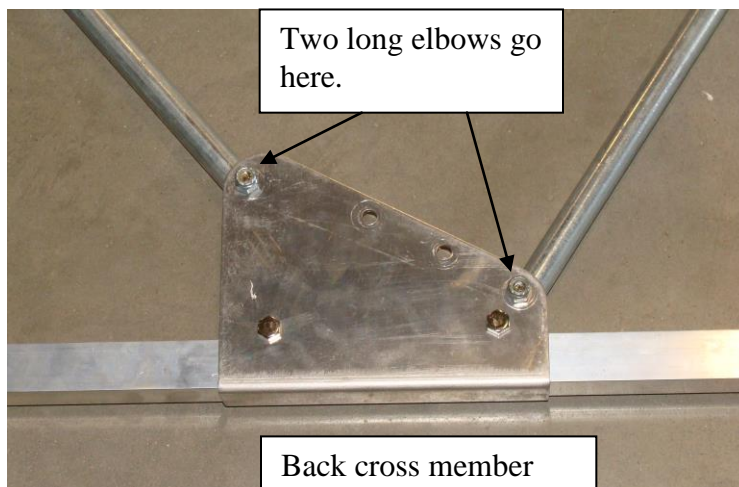
PARTS LIST

Item #	Qty	Description
1.	2	Support Pivot (Hinge)
2.	2	Main support bars – Cross member (square tube)
3.	4	Extension bars for main support bar
4.	8	L-Tube (Elbow) 6 – Short Elbows 2 – Long Elbows
5.	12	Straight tubes
6.	1	Camouflage Blind
		Hardware Bag (Items listed below)
7.	32	1/4" x 1 1/4" Bolt
8.	32	1/4" nylock nut
9.	12	3/8" x 2" Bolt
10.	12	3/8" nylock nut
11.	16	3/8" plastic washer

Tools required

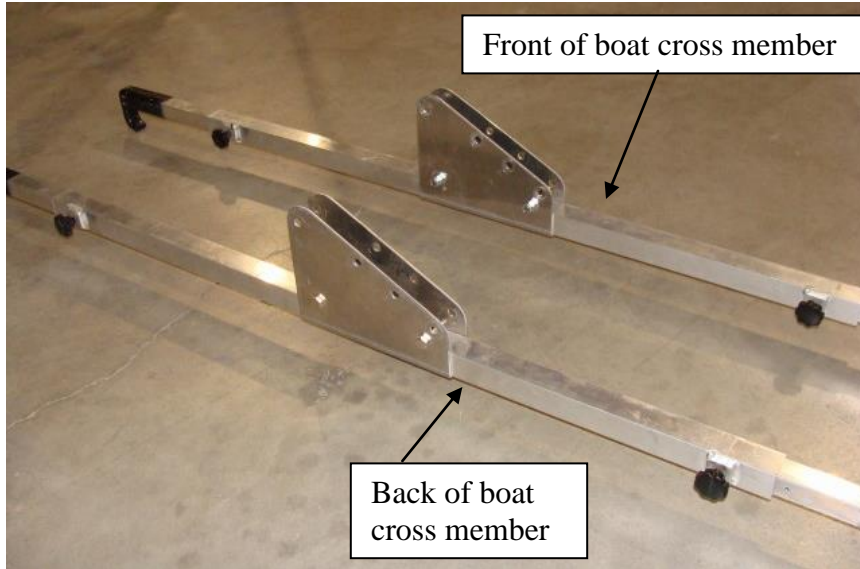
7/16" wrench and 7/16" socket with ratchet
9/16" wrench and 9/16" socket with ratchet

Note: The 2 long elbows will be at the back of the blind on the outsides with 2 short elbows to the inside.



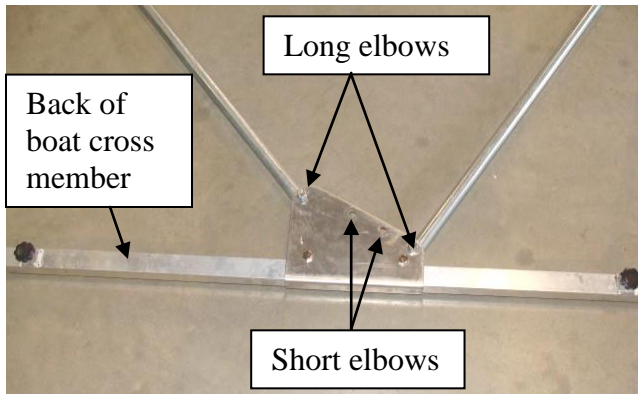
Assembly

1. Attach the two support hinges to the main support bars using the 3/8" x 2" bolts and 3/8" nylock nuts. The hinges should be centered on the main support bar. Slide extension bars into the main bars and secure with knobs. If desired 5/16" x 3/4" bolts may be substituted for the knobs for a more secure fit when attached to the boat.

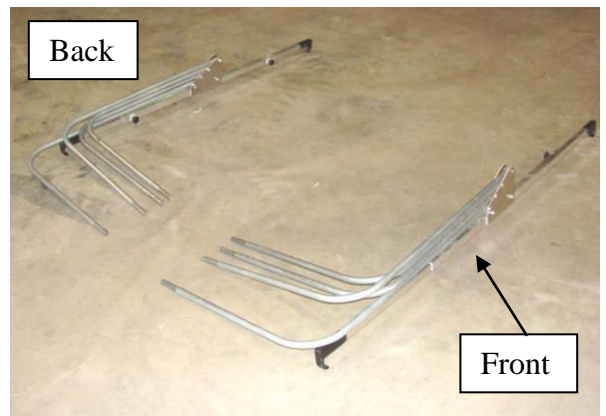


With support hinges in these positions the blind will open from left to right. If the hinges are reversed, the blind will then open from right to left. It can be set up either way but normally it opens from left to right.

2. Fasten the eight elbows to the support hinges using the 3/8 x 2 bolts, plastic washers and the 3/8 nylock nuts.

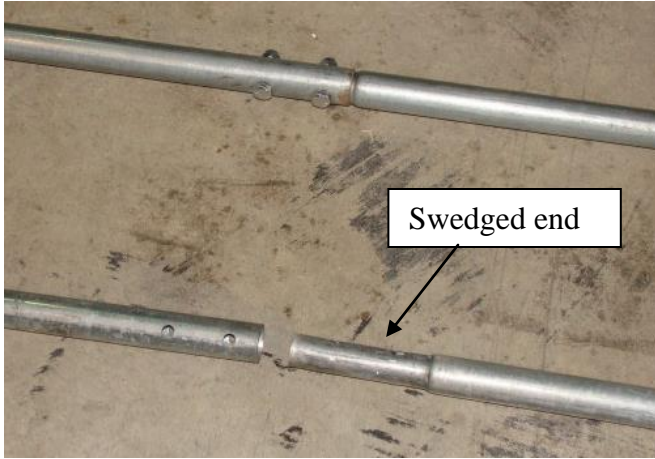


The cross member and hinge that will be at the back of the boat will need to have the 2 long elbows in the outside holes as shown above. The short elbows go in the two center positions.



The front cross member and hinge will use 4 short elbows.

3. Assemble three of the straight tubes to form the long center bar using the $\frac{1}{4}$ x $1\frac{1}{4}$ bolts and $\frac{1}{4}$ nylock nuts. First bolt two straight pieces together that each have a swedged end. The third piece will not have the swedged end and will be the last piece bolted on. There will be four long center bars when finished.



4. Lay the fabric blind out on a clean area, pattern side down. Insert the long center bars into the fabric tunnels as shown. Gather the material towards the center to make it easier to get at the ends.



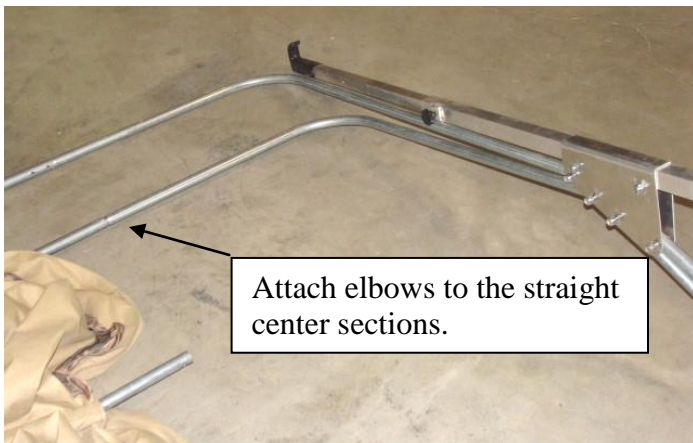
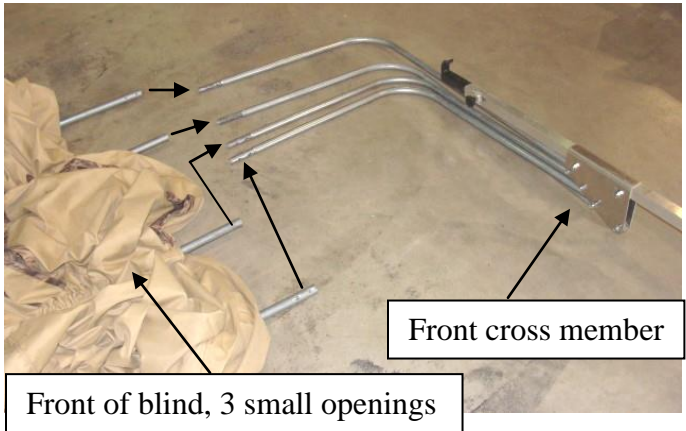
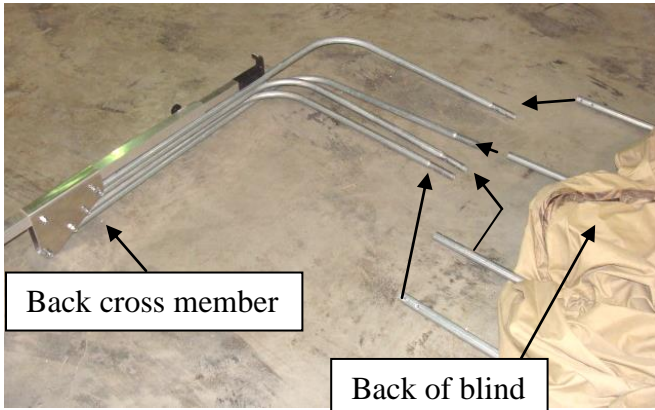
5. Determine the front of the blind. It has 3 small openings, one for each front corner and one for the bow peak. The back will have 2 small openings, one for each back corner.



Three openings at the front of the blind.

6. Layout the cross members and hinges with the elbows on each end of the blind as shown in the pictures. They should be turned over so the hinge and elbows are on the bottom.

Beginning with the back of the blind, attach the elbows to the straight center sections using the $\frac{1}{4}$ x $1\frac{1}{4}$ bolts and nylock nuts. Start with the top elbow and the top center straight section and work your way down. Repeat on the other side.



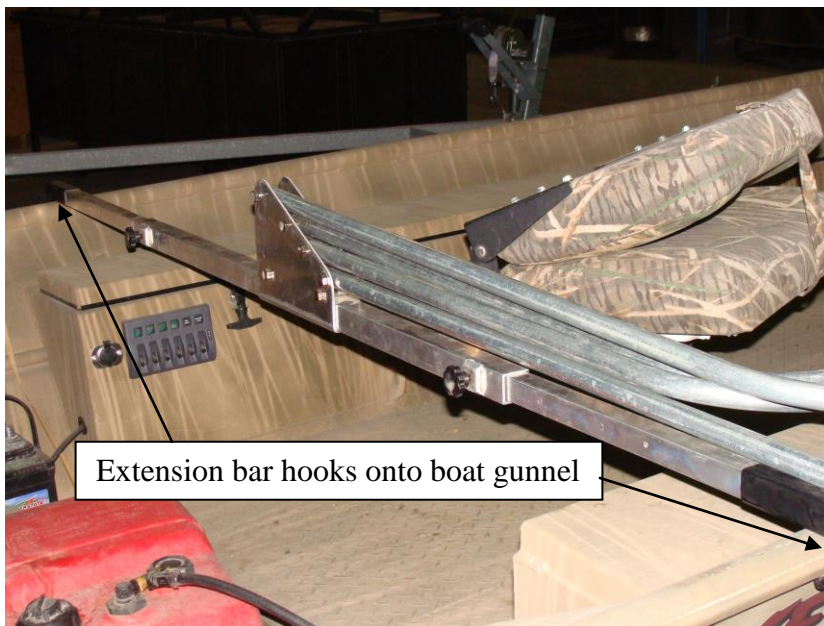


All eight elbows attached.



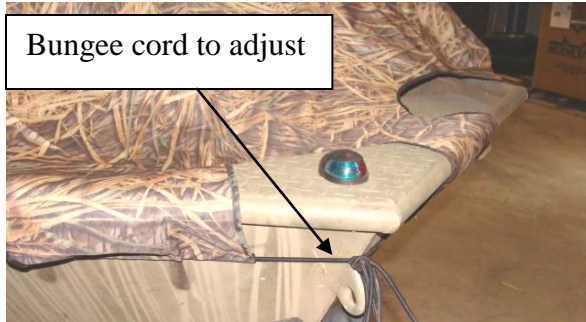
Elbows attached and blind turned right side up.

7. Set the blind up on the boat and center it to your liking and the best fit for your boat. The blind may be moved forward or backward as needed. Once the correct position is found the rubber dipped extension bars should be pushed tight against the boat. Securely tighten down the black knobs to hold the blind in place. 5/16 x 3/4 bolts may be used instead, to prevent the bars from vibrating loose when traveling, and tightening with a wrench.



Extension bar hooks onto boat gunnel

8. Adjust the canvas as necessary for the best fit. The bungee cord may be shortened by tying a knot at the front of the boat to tighten the canvas and make for a better seal and fit.



9. Attach the travel boot by first folding the ends of the blind towards the center so all of the material may be covered when traveling. Also attach the travel straps around the elbows and the main support bars.



Care, Cleaning and Hints

1. Allow canvas to dry before storing. Do not store wet.
2. Utilize the vegetation straps to increase the effectiveness of the blind.
3. Use mud or a light dusting of brown camo paint to reduce any shine of the fabric when the blind is new.
4. Leave the travel boot on until the decoys have been set out.
5. The blind is designed to fit a number of boats and the parts can be adjusted or moved to best fit a particular boat.