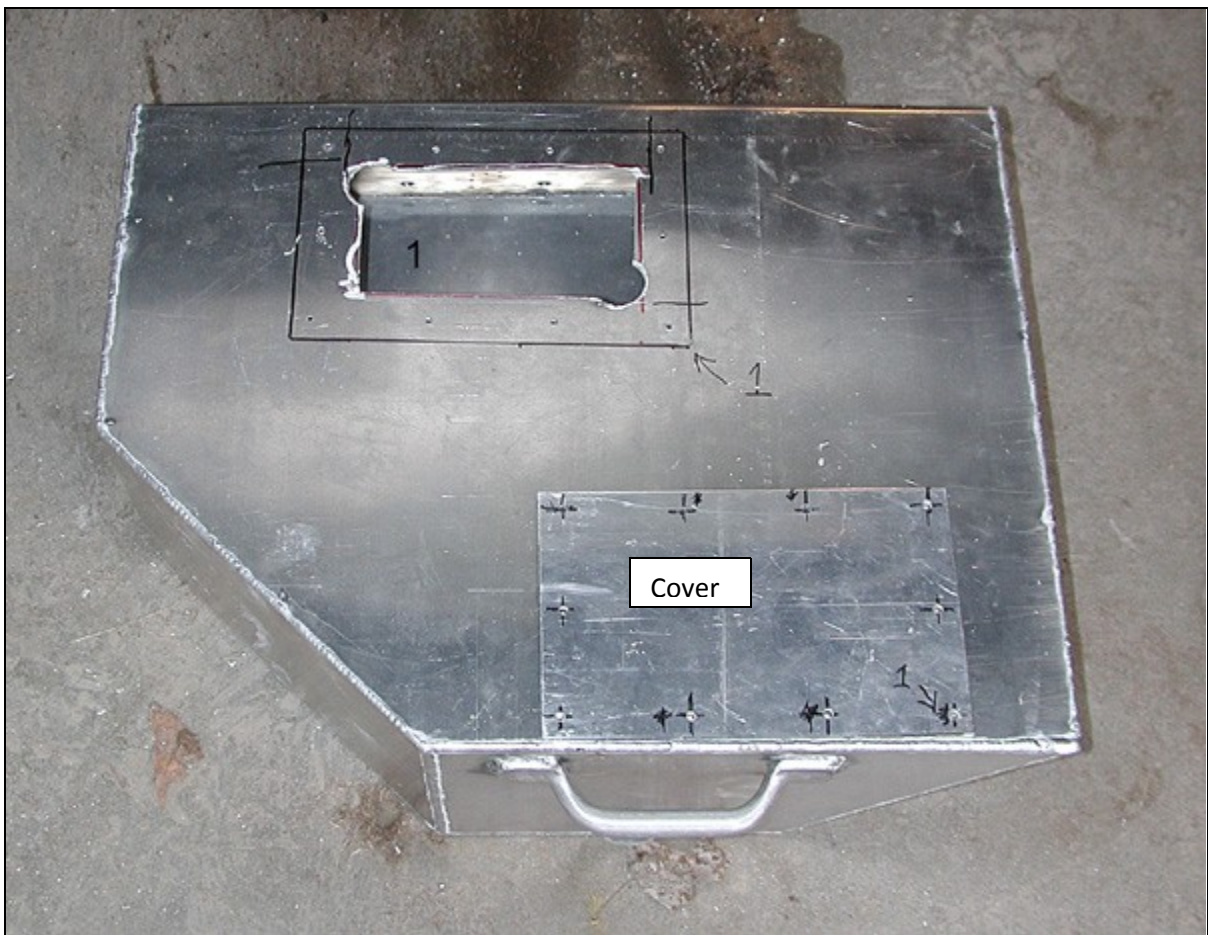


# BEAVER TAIL

## Bolt on Performance Pod Instructions



1. Cut an access hole (#1) in the top of each pod. After the pods are installed, a cover (not included) is fastened over each access hole with sealant and screws. Another option is to install an access hatch available from marine supply dealers. They can be either round or rectangular. This provides a clean professional look.



## Drilling Mounting Holes

Remove all the bolts and rivets through the transom in the area where the pods are to be attached. Position the pod in place, secure it with cargo straps and drill through the existing holes in the transom and into the pod. Then secure the pod to the transom with bolts through these holes and remove the cargo straps. These bolts keep the pod from moving while locating and drilling the eight main mounting holes inside of each pod. If there are no existing holes to drill thru, then locate and drill the main mounting holes inside of the pods while they are held in place with the cargo straps. Secure the pod in place after drilling each hole with a bolt and nut. This will keep the pod from moving while drilling the rest of the holes.



### Reinforcement

Use two 1/4" x 2" flat aluminum strips (not included) to provide reinforcement to the transom for each pod. Use eight 3/8" bolts, washers and nylock nuts to secure each pod to the transom.



### Holes for Mounting

In preparation for the final assembly of the pods to the boat the paint may be sanded off the area to be covered by the pods. This will help the adhesive/sealant stick to the boat and provide a better seal. 3M 5200 Marine Adhesive/Sealant is recommended. This may be applied to the entire area where the pods will be mounted.

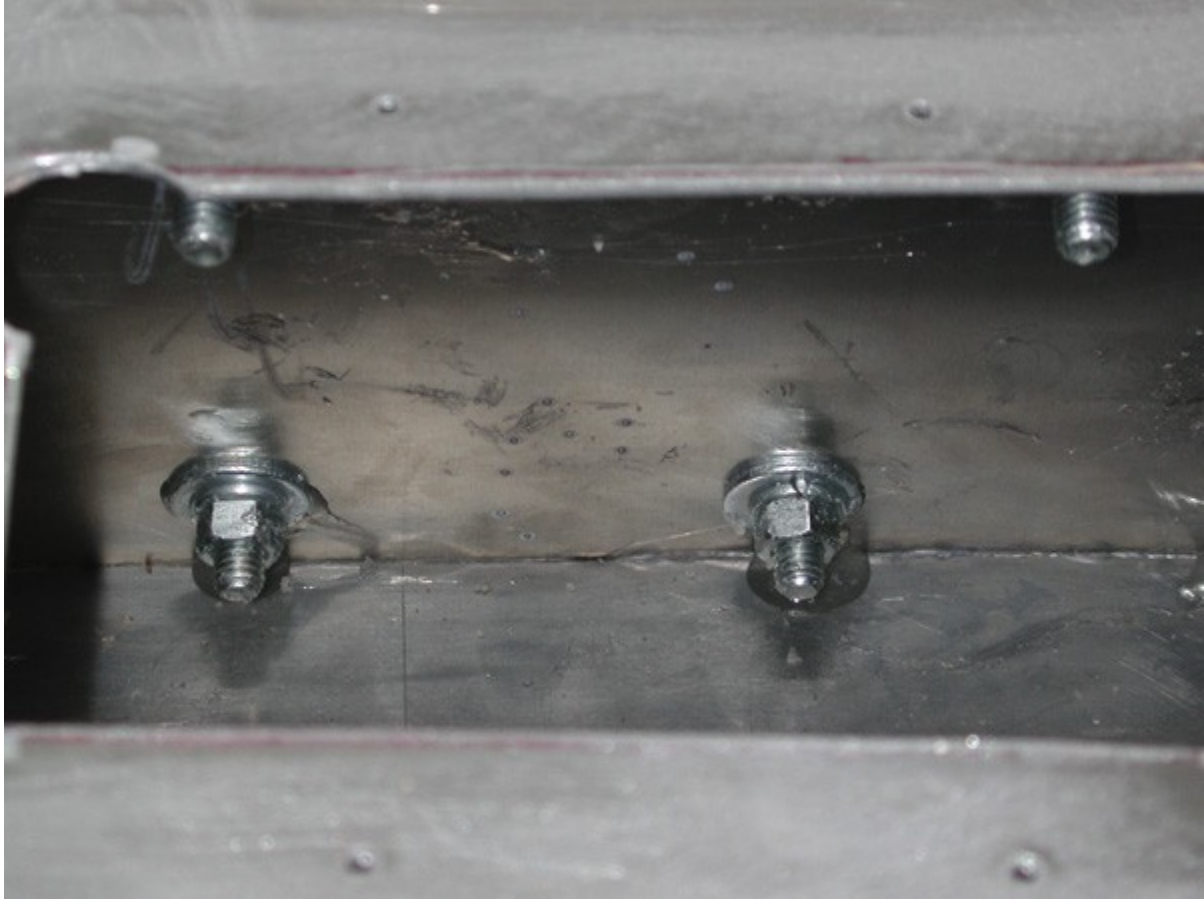


### Ready for Final Assembly

Getting a good watertight seal around all the holes is critical to a successful installation. Use a good marine grade of adhesive/sealant to insure a watertight installation. Each pod may be tested for fit and alignment prior to starting the final installation with the adhesive/sealant. Lay out all of the parts so the installation goes quickly and smoothly.



Apply a liberal amount of sealant to the surface of the pod (around each hole and near the outer edges of the pod). Secure the pod to the transom with two bolts. Apply the sealant to each reinforcing strip and install them using the eight main mounting bolts. Work quickly to get all of the bolts in place and tightened before the sealant becomes too stiff to adhere properly. Once the first pod is in place the second pod may then be mounted onto the boat by repeating the process.



### Bolts Inside the Pod

This is a view through the access hole in the first pod after the pod has been attached with the sealant. Some of the sealant that came through the bolt holes is visible in this shot. Use nylock nuts on the bolts to keep them from working loose over time. Before sealing up the access hole in the pods check all of the bolts to make sure they are tight.



### Completed Installation

Here is the completed installation with both access holes covered and sealed.