

BEAVERTAIL

Instructions Stealth 2000 Layout Blind

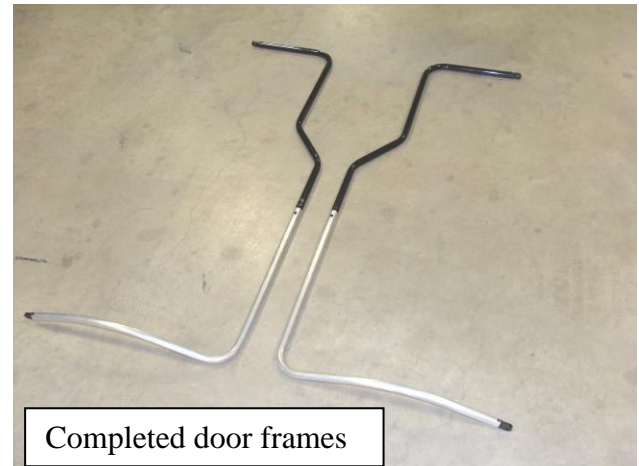
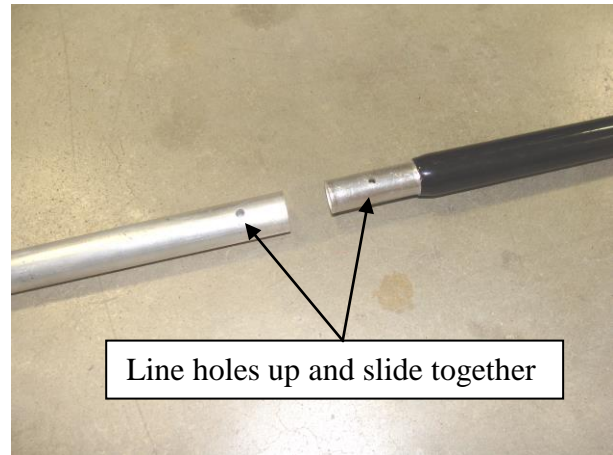
PARTS LIST

Item #	Qty	Description
1.	2	Door Frame Bottom
2.	2	Door Frame Top (black powder coating)
3.	1	Brace Tube
4.	1	Blind Canvas
5.	1	Adjustable Backrest
		Hardware Bag 1(items listed below)
6.	4	Hinge Brackets
7.	4	Locking Pins
8.	8	3/4" Stainless Screws
9.	2	Small Black Screws
10.	2	3/4" Self-tapping screws (use is optional)
		Hardware Bag 2 (items listed below)
11.	2	Brass Inserts with 1/4" threads
12.	2	1/4" x 1 1/2" fully threaded bolt
13.	2	Plastic caps for bolts

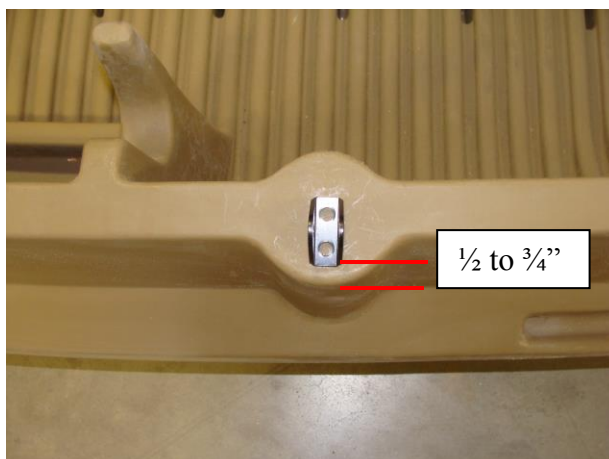
Tools required

Cordless Drill/Driver
Long Phillips Bit
5/16" Drill Bit
Flathead Screwdriver
Hammer
Marker
Tape Measure

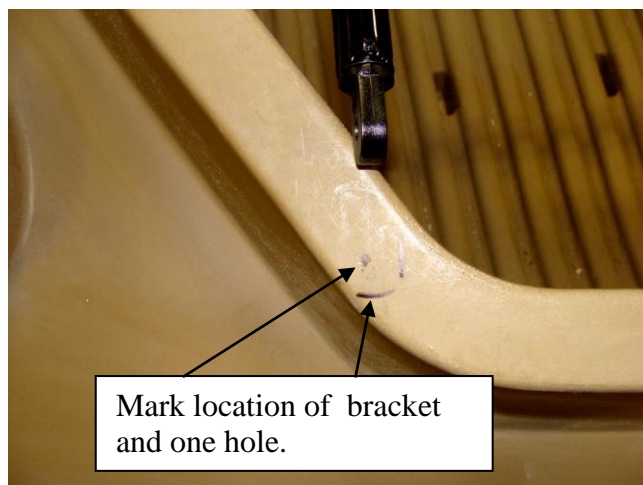
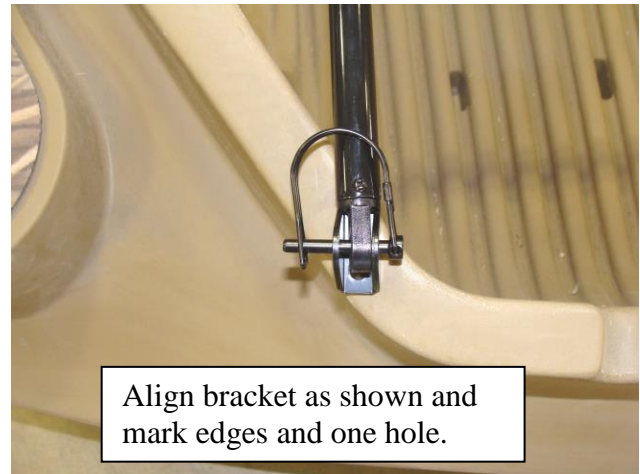
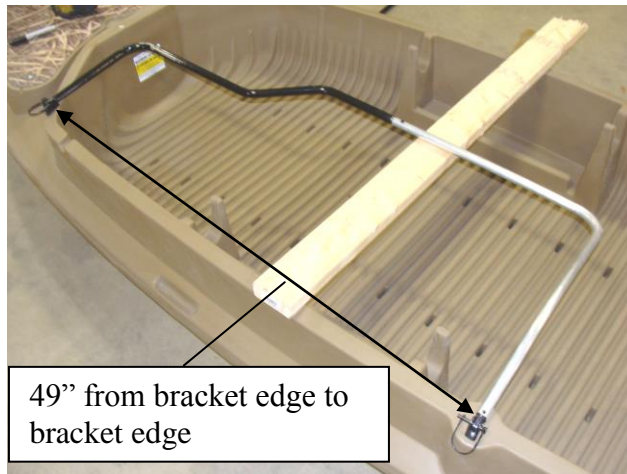
1. Layout door frame pieces top and bottom as shown. Line up the predrilled holes, and slide the pieces together. Tighten securely with the small black screws. The optional $\frac{3}{4}$ " self tapping screws may be installed on the opposite side if desired.



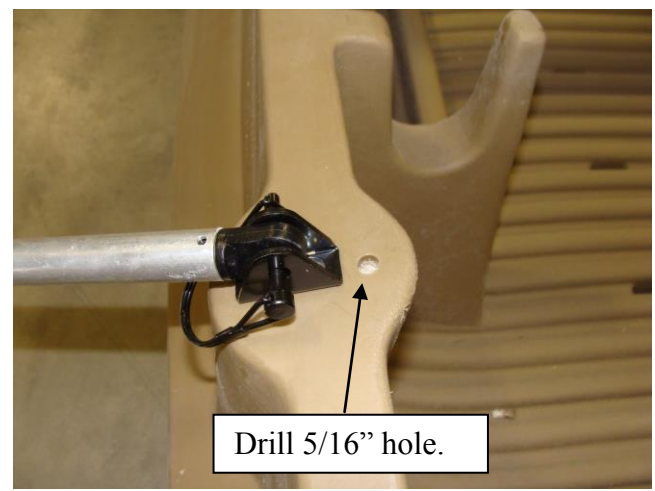
2. Attach the hinge brackets to the boat, center the bracket in the round area near the center of the boat. Place bracket $\frac{1}{2}$ "- $\frac{3}{4}$ " from the boat edge and mark the two holes as shown below. Secure bracket with the $\frac{3}{4}$ " stainless steel screws.



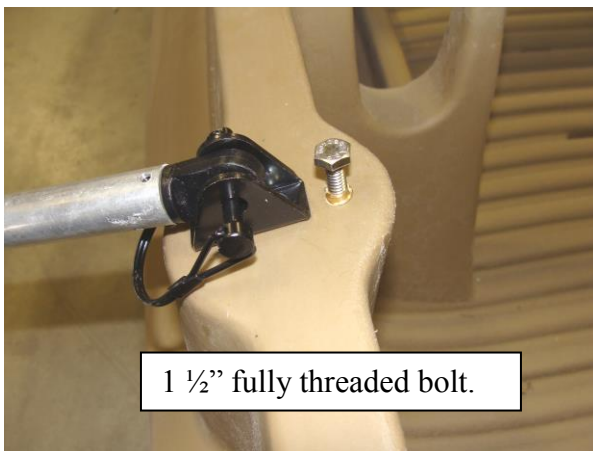
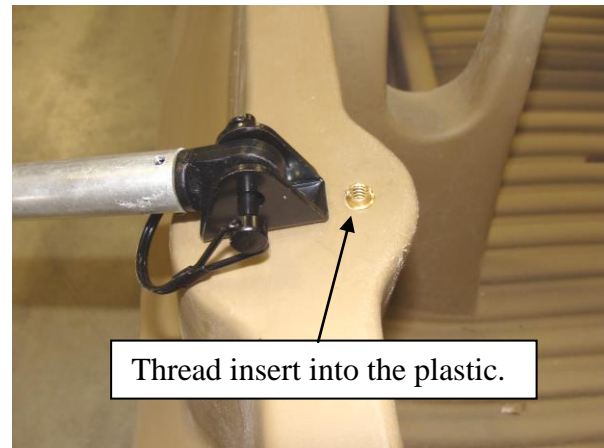
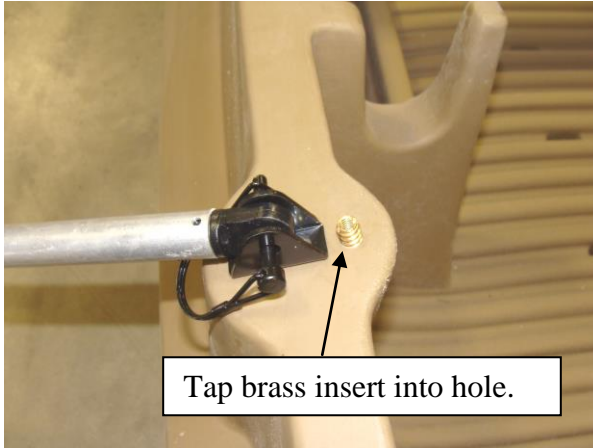
3. Attach door frame to bracket at center of boat using the locking pin and place 2 x 4 across the boat to help support it. Attach another bracket to the other end of the door frame and align it on cockpit edge as shown. Mark location and secure bracket with two $\frac{3}{4}$ " stainless steel screws.



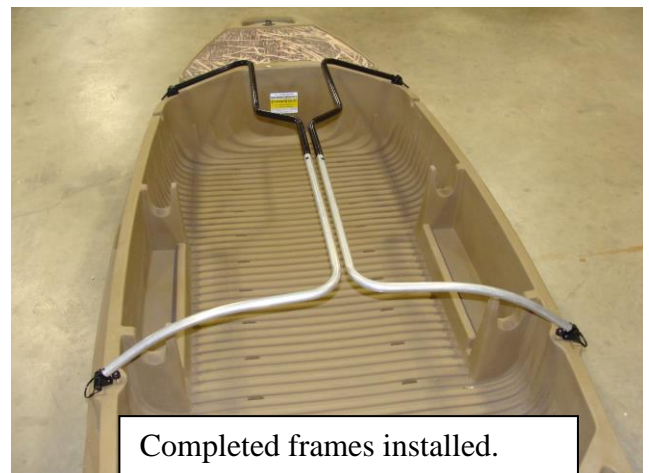
4. Flip the door frame open and place a mark $\frac{3}{8}$ " from bracket edge and centered. Drill a $\frac{5}{16}$ " hole at the mark. **Note: Drill bit must be $\frac{5}{16}$ ".**



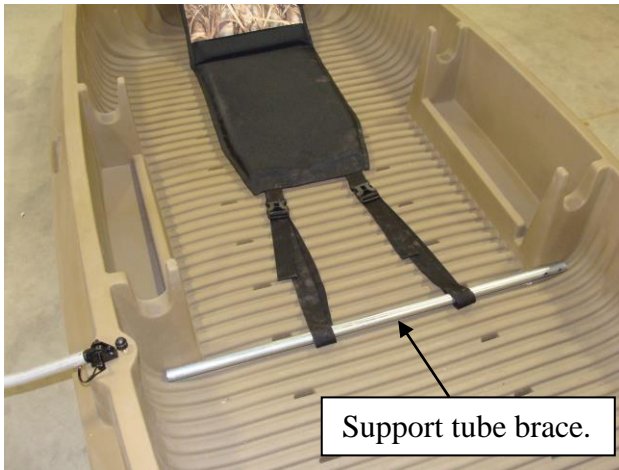
5. Insert brass insert, slotted end up, into the hole and tap in with a hammer to get it started. Make sure it is going in straight. Thread the insert into the hole with a flathead screwdriver. Install the $\frac{1}{4} \times 1 \frac{1}{2}$ " fully threaded bolt into the insert and place the plastic cap on top of it. **Note: This will adjust the height of the door frames.**



6. Repeat process to install the other door frame.



7. Install support brace as shown. Loop bottom seat straps around the tube and latch. Loop top seat straps around the boat handle at the boat front and latch. Adjust as necessary for a comfortable fit.



8. Locate seat access zipper on the blind canvas. Fit this area over the seat and hook shock cord sewn into the hem over the back boat handle. Stretch canvas out and hook the other end over the front handle. Fold doors out to the side. Detach door frames and slide into the sewn pockets. Reattach the door frames to the brackets.





Completed blind.

Care, Cleaning and Hints

1. Allow canvas to dry before storing. Do not store wet.
2. Utilize the vegetation straps to increase the effectiveness of the blind.
3. Use mud or a light dusting of brown camo paint to reduce any shine of the fabric when the blind is new.
4. Adjust door height for the best or desired fit.
5. Zipper allows easy access to the seat for paddling or motoring the boat.
6. Quick detach pins allow easy removal of door frames if necessary.